



6 Coulson Court

Prestwood
HP16 0QB
£205,000



- First floor, one bedroom apartment
- Quiet location overlooking playing fields
- Well presented, with refitted kitchen and modern bathroom suite
- Level walk of local amenities
- No age restriction
- 989 years remaining on lease



PROPERTY FACTS

Communal entrance hall | Hallway with deep store cupboard and shelved storage cupboard | Sitting room | Re-fitted Kitchen | Bedroom | Bathroom | Carpark | Communal gardens

LOCATION FACTS

Prestwood village centre has an excellent range of day to day facilities available including a variety of local shops, ie Butchers, Bakers, Newsagents, Post Office, Chemist, Florist and Supermarkets, together with Doctors' and Dentists' surgeries. There are local schools for children up to the age of 11 years. For secondary education, Prestwood lies in the catchment area for the Amersham/Chesham Grammar Schools and The Royal Grammar School for Boys in High Wycombe. The Misbourne School in Great Missenden also offers schooling for 11-18 year olds. Private schools close by include The Gateway in Great Missenden and Pipers Corner for girls in Great Kingshill. Nearby Great Missenden also offers a main line rail link into Central London which is ideal for the commuter. For more extensive requirements both High Wycombe and Amersham are approximately 4/5 miles from Prestwood.

ACCOMMODATION IN BRIEF

Kitchen 13'1" x 6'3"

Sitting Room 16'5" x 10'6"

Bathroom

Bedroom 12'10" x 10'6"



Directions

From our offices in Prestwood continue along the High Street towards Great Missenden, turning right into Nairdwood Lane (Cross Way garage on corner). Coulson Court will be found a short way along on the left hand side, indicated by our Wye Country "For Sale" Board.

Whilst we endeavour to make our sales details accurate and reliable they should not be relied upon as statements of representation of fact and do not constitute any part of an offer or contract.

Additional Information

EPC band D

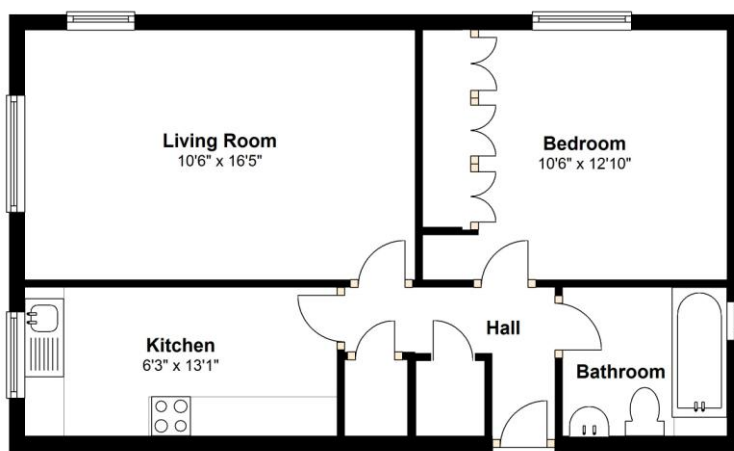
Council Tax band C

989 year lease remaining

Service charge £300/half year (includes ground rent and maintenance)

Ground Floor

Approx. 486.4 sq. feet



Total area: approx. 486.4 sq. feet